

EVERY MEAL

FIGHTING CHILD HUNGER



NOTE FROM OUR PRESIDENT

This year, we achieved a major milestone that will transform our long-term impact on child hunger in Minnesota. We purchased the building that we've been partially occupying for several years! The expanded space nearly doubles our capacity, enabling us to lower our operational costs and allocate more resources directly to our programs **so we can serve more kids**. This decision positions us to make an even greater impact in the years to come, continuing our vision of *Every Child. Every Meal*.

The reason this milestone matters is because of families like Tracy's. I met Tracy first as a donor when she joined her company at Every Meal to present a generous donation. During the warehouse tour, she shared that her kids used to receive our food bags. As a single mom of three with a fixed income and tight budget, they relied on our food bags to make it through a difficult time.

Tracy has come full circle, now coming alongside us as a supporter, giving back to ensure other children have the support she once received. Her story is a testament to the enduring impact of our work and the ripple effect of generosity.

While the numbers in this report are important, they tell a story that goes beyond the data - a story of lives changed and futures brightened. Each number represents a child - a family like Tracy's - and a community strengthened through compassion and action. Together, we are not just addressing child hunger. We are creating hope and a brighter future for all our kids.



Rob Williams
Rob Williams, President

OUR MISSION

FIGHT CHILD HUNGER THROUGH COMMUNITY & SCHOOL PARTNERSHIPS

everymeal.org

MORE BUILDING, MORE IMPACT

In January 2024, Every Meal celebrated a major milestone in our fight against child hunger: the official purchase of our whole building!

The additional space nearly doubles our capacity, enabling us to provide even more food to Minnesota kids experiencing food insecurity. We estimate that more than 300,000 kids in Minnesota don't have enough food to eat, and this expansion is critical to our ability to serve more kids.

We thoughtfully considered various options, and purchasing a building was the best long-term financial and strategic decision to sustainably lower our overall operation cost and increase our program impact.



Rendering credit: Cuningham

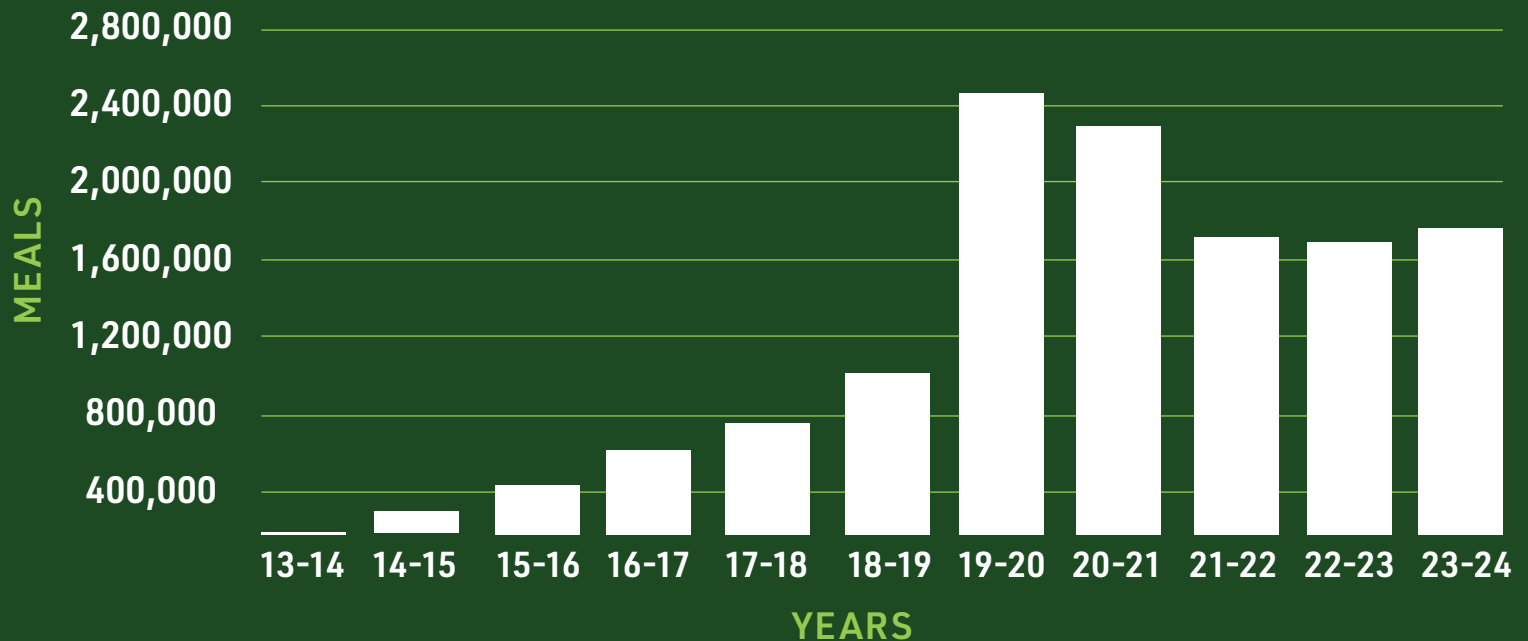
HOW WE MEASURE “SUCCESS”

IMPACT OF OUR MULTIPLE FOOD GAP PROGRAMS IN 2023-2024 SCHOOL YEAR

1,764,064 meals | 644 food distribution locations

OUR IMPACT

Number of meals served to children in our community by school year



13.5 MILLION MEALS PROVIDED

POPULATIONS SERVED

Families may choose from five food bag options tailored to various cultural dietary preferences or situational needs.



Blue Bag

Tailored for East African dietary preferences.



Green Bag

Tailored to offer the widest variety of food items



Orange Bag

Tailored for Latino dietary preferences



Purple Bag

Tailored for Southeast Asian dietary preferences



Yellow Bag

Tailored with ready-to-eat items that require little or no preparation



Scan QR code to see our 5 food bag options or go to www.everymeal.org/foodbags

GEOGRAPHIC LOCATIONS

Every Meal fills the gaps in food access that children face, especially on weekends when they're not able to eat school meals. We served children and families across Minnesota through our multiple food gap programs in the following cities:

Adrian, Albertville, Andover, Anoka, Apple Valley, Blaine, Bloomington, Brooklyn Center, Brooklyn Park, Burnsville, Cambridge, Cannon Falls, Carver, Champlin, Chanhassen, Chaska, Columbia Heights, Coon Rapids, Cottage Grove, Crystal, Dayton,

79 CITIES

Delano, Eagan, Eden Prairie, Edina, Elk River, Farmington, Fridley, Golden Valley, Goodhue, Ham Lake, Inver Grove Heights, Isanti, Jordan, Lake City, Lake Elmo, Lakeville, Little Canada, Long Lake, Maple Grove, Maplewood, Mazeppa, Minneapolis, Minnetrista, Monticello, Mora, Mound, New Hope, New Prague, North St. Paul, Oakdale, Osseo, Otsego, Plymouth, Red Wing, Richfield, Robbinsdale, Rockford, Rogers, Rosemount, Roseville, Savage, Shakopee, Shoreview,

South St. Paul, St Paul Park, St. Cloud, St. Louis Park, St. Michael, St. Paul, Victoria, Wabasha, Watertown, West St. Paul, Woodbury, Worthington, Zimmerman, Zumbrota



Scan QR code to see an interactive map of our food distribution locations or go to www.everymeal.org/wherewework

2023-2024 FINANCIAL STATEMENTS

(JULY 2023-JUNE 2024)

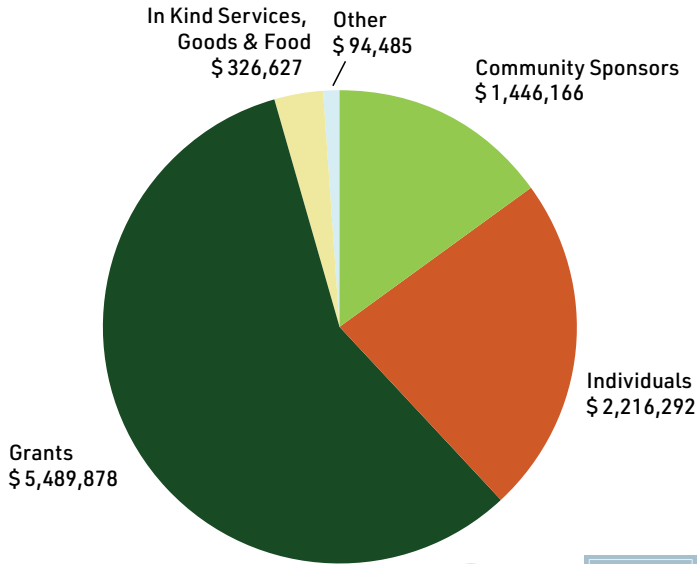
Revenue	2023-2024 **	2022-2023 **	2021-2022 *
Community Sponsors	\$ 1,446,166	\$1,420,444	\$1,074,907
Individuals	\$ 2,216,292	\$3,559,199	\$3,301,232
Grants	\$ 5,489,878	\$3,853,785	\$1,619,922
In Kind Services, Goods & Food	\$ 326,627	\$891,339	\$221,261
Other	\$ 94,485	\$769,864	\$112,143
Total Revenue	\$ 9,573,448	\$10,494,631	\$6,329,465
Program Expenses			
Program Services	\$ 5,059,076	\$5,849,138	\$5,143,954
Management & General	\$ 654,865	\$741,780	\$633,194
Fundraising & Volunteer Recruitment	\$ 1,174,374	\$1,077,245	\$820,345
Total Functional Expenses	\$ 6,888,315	\$7,668,163	\$6,597,493
Net Revenue/Deficit	\$ 2,685,133	\$2,826,468	(\$268,028)
Assets			
Cash	\$ 1,125,902	\$2,945,706	\$1,215,807
Inventory	\$ 898,297	\$1,080,205	\$1,388,690
Property & Equipment	\$ 8,184,350	\$326,741	\$722,552
Other Assets	\$ 1,229,847	\$2,381,431	\$174,026
Total Assets	\$ 11,438,396	\$6,734,083	\$3,501,075
Liabilities & Net Assets			
Accounts Payable & Accrued Expenses	\$ 141,759	\$214,911	\$75,294
Deferred Revenue	\$ 12,191	\$ 179	\$ -
Deferred Rent	\$ -	\$ -	\$41,416
Capital Lease	\$ 263,599	\$517,678	\$209,518
Line of Credit	\$ 250,000	\$ -	\$ -
Notes Payable	\$2,084,399		
Total Liabilities	\$ 2,751,948	\$732,768	\$326,228
Total Net Assets	\$ 8,686,448	\$6,001,315	\$3,174,847
Total Liabilities & Net Assets	\$ 11,438,396	\$6,734,083	\$3,501,075

* Fiscal year 2021-2022 had a net deficit due to utilization of previous fiscal year net revenues - mostly as a result of the timing of COVID-19 pandemic and donor response.

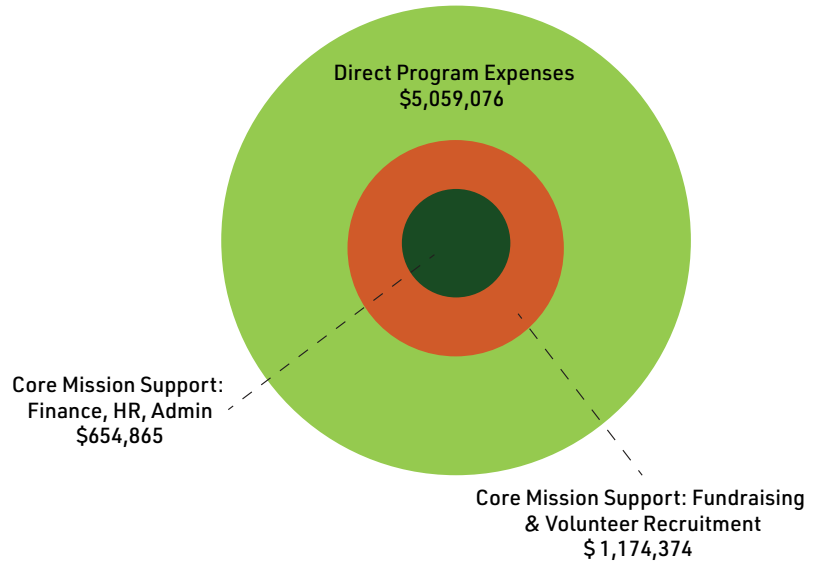
** Fiscal years 2022-2023 and 2023-2024 had a significant net revenue due to funding received and pledged for a capital building purchase.

2023-2024 FINANCIAL OVERVIEW

Revenue Total: \$9,573,448



Expenses Total: \$6,888,315



Fiscal years 2022-2023 and 2023-2024 had a significant net revenue due to funding received and pledged for a capital building purchase.

BOARD OF DIRECTORS

Jenna Soule (Chair)

Owner and Head of Marketing, Tonka Bay Marina

Bob Peterson (Vice Chair)

Finance Director, Allina Health

Rachel Riensche (Secretary)

Senior Counsel, American Public Media Group

Helene Clark (Treasurer)

Retired, Chief Marketing & Strategy Officer, Welch's

Ranjit Ahluwalia

Managing Director, PointState Capital

Stephanie Bach

Director, BMO Commercial Bank

Ryan Beach

Vice President, Health, Target Corporation

Irfan Chaudhry

Assistant Director of Food and Nutrition Services, Osseo Area Schools

Karen Contag

Community Volunteer

Latanya Daniels

Assistant Superintendent of Richfield Public Schools

Chris Duffy

Vice President of Public Relations, Goff Public

Kelly Gulbrandson

Director of Community Relations, Apple Autos

Christina Haddad Gonzalez

Director of Student Support Services, Richfield Public Schools

Brandon Jones, MA

Executive Director, Minnesota Association For Children's Mental Health

Susan Munson-Regala

Vice President and CFO, Employee Benefits, Securian Financial

Jo Saxton

Speaker, Author, Executive Director of The25 at Bethel University

Bob Thomas

Marketing Executive

Scott Tonneson

Portfolio Manager, Nuveen

Rob Williams (Staff)

President and Founder, Every Meal

SUPPORTERS AND VOLUNTEERS

We couldn't do it without our partners in the community - thank you!

- * 3,111 VOLUNTEERS
- * 11,177 VOLUNTEER HOURS
- * 2,801 DONORS



CONTACT US

2723 Patton Road, Roseville, MN 55113

everymeal.org

612-568-4003

facebook.com/EveryMealOrg

instagram.com/everymealorg

linkedin.com/company/Every-Meal

HOW YOU CAN HELP FIGHT CHILD HUNGER



**SPONSOR A
SCHOOL**



VOLUNTEER



**SPREAD
AWARENESS**



DONATE



everymeal.org